

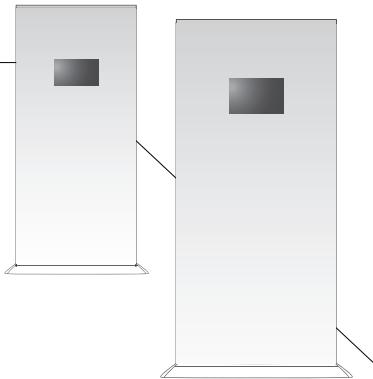


PIM[®] ROLL-UP BANNER

USER GUIDE

What's Included

- Pre-installed Banner
- PIM Luxury Base & Telescopic Pole
- Carrying Bag
- PIM Display Video System Package
(if you have purchased the video system)

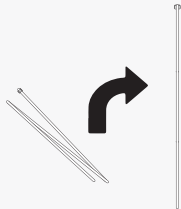


1.



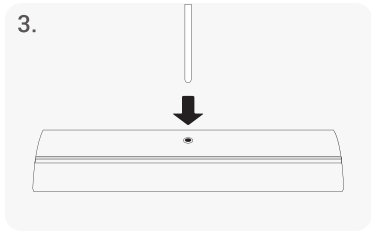
Unzip carrying bag to remove telescopic pole and base unit with pre-installed banner.

2.

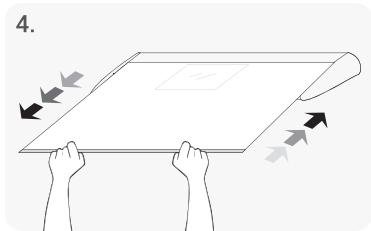


Unfold telescopic pole so that it snaps into place and stands upright.

Note: For double-sided units, you will receive 2 poles.



Insert round end of telescopic pole into round slot of base unit.

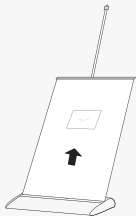


To ensure proper tension release, firmly take hold of top rail. Lift carefully and allow banner to recoil back into base.

Repeat 2x.

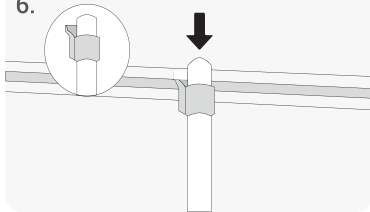
Note: It might be helpful to have someone assist by holding base unit steady.

5.



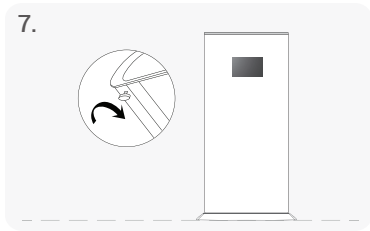
Slightly tilt base backwards and begin carefully pulling banner from base.
(Make sure to firmly hold onto top rail)

6.

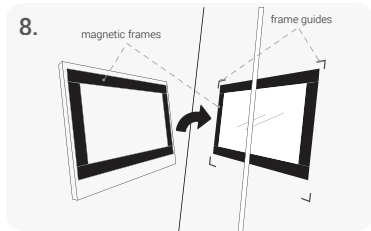


The hooked plastic clip on pole hooks into rear slot of top rail.
(Make sure pole is centered)

Note: For double-sided units, repeat this step for 2nd banner.



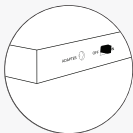
Unit can be leveled by adjusting threaded plastic feet at bottom of base unit.



Locate magnetic frame around PIM screen and attach to magnetic frame on back of banner. There are frame guides in all 4 corners of banner opening to assist you.

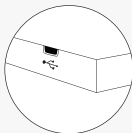
9.

13" power
adapter port



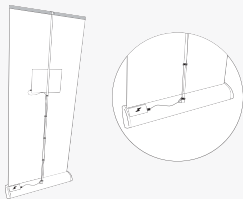
7"/10" data transfer
& charging port

13" data transfer only



The 7" & 10" screens utilize a micro USB cable for data transfer and built-in battery charging. **The 13"** screen utilizes a micro USB for data transfer and a power adapter for playing (unit must be plugged in to play).

10.



When using wires, fasten USB or power cable against banner pole using our Deluxe Cable Ties to avoid both a messy-looking setup, and a tripping hazard.

PIM[®] DISPLAY VIDEO SYSTEM

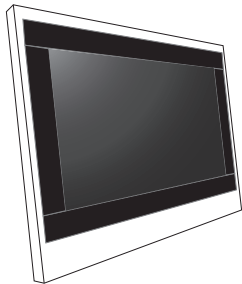
USER GUIDE

PIM video screens are compatible with any computer (PC or Mac). Simply connect your PIM screen and transfer your videos, pictures and/or music.

Follow our 4 simple steps to play your videos, pictures and/or music on your device.

What's Included

- PIM screen
- Micro USB cable
- Charging/Power adapter
- PIM PowerPack (if purchased)



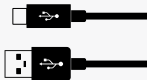


Screen resolutions

- 7" IPS HD – 1024 x 600 px
- 10" IPS HD – 1280 x 800 px
- 13" IPS HD – 1920 x 1080 px

Features

- 1GB built-in memory
- On/Off switch
- Volume wheel



Connect PIM screen to your computer

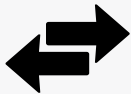
Use micro USB cable to connect your PIM screen to a USB port on your computer.

**PC installation**

A pop-up message will appear on your screen with the following message: "Found New Hardware". Wait for install to finish – Windows will automatically install driver, no additional driver is needed.

**MacOS installation**

A "Removable Disk" icon entitled "PIM Display" will appear on desktop.



Transferring files

After connecting your PIM screen to your computer, a removable storage disk device entitled "PIM Display" should appear. Double-click on this icon to manage your content.

PIM screens are designed to play videos, pictures and music files.

Content can be added/removed from the existing 3 folders: "MUSIC", "PICTURES" and "VIDEO", depending on your file type.

PIM screens are designed to play video files first. Picture and music files are played second and simultaneously (therefore a slideshow of the pictures will play with background music).

Note: if the "VIDEO" folder is empty, the device will automatically begin a slideshow using the pictures in the "PICTURES" folder (along with background music if music files have been transferred into the "MUSIC" folder).

Supported file types:

- Video: AVI, MP4, H.263, WMV, MPG, MPEG-I, MPEG-II
- Audio: MP3, WMA, WAV, OGG, FLAC, AAC, AMR, RA
- Photo: JPEG, BMP, GIF, PNG, TIF

**Safely disconnect your device**

Click on "Safely Remove Hardware and Eject Media" shortcut at bottom right corner of screen and select "Safely Remove USB Mass Storage Device". Disconnect your device from USB cable and use ON/OFF switch located on side of the PIM screen to start using your screen.

**Safely disconnect your device**

Eject PIM Display Drive. Disconnect your device from USB cable and use ON/OFF switch located on the side of PIM screen to start using your screen.



7" & 10" screens

Play - screens include a built-in battery and are designed to play content up to 6 hours.

Charge - plug power adapter into an outlet and use USB cable to connect your PIM screen to the adapter. Alternatively, device will also charge when connected to a computer. Battery status will appear on top right corner of your screen.



13" screen

Play - screen does not include a built-in battery, it must be connected to a power outlet using provided power adapter to play.

Note: PIM PowerPack can be used as an external battery.



Cleaning

Follow these general rules when cleaning outside of your PIM screen & components:

- Make sure your screen is turned off before attempting to clean it.
- Use a soft, lint-free cloth to wipe screen. The cloth can be moistened with screen solution. Avoid getting moisture in openings.



- Do not use aerosol sprays, solvents, alcohol or abrasives anywhere near your PIM screen & components.

Handling

Your PIM screen may be damaged by improper storage or handling. Be careful not to drop your device during use or transport.



Important Safety Instructions

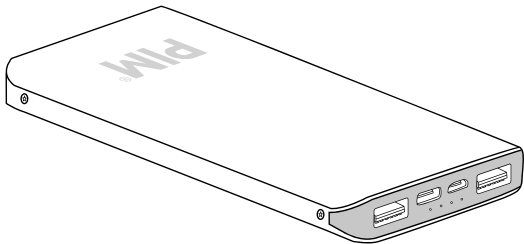
When setting up and using your PIM screen, remember to follow all instructions and warnings.

- Never force a connector into a port. If connector and port do not join with reasonable ease, they probably do not match. Make sure that connector matches port and that you have positioned connector correctly in relation to port.

- Operate your PIM Display Video System in a place where the temperature is between 14°F and 122°F (-10°C and 50°C).
- Store your PIM Display Video System in a place where the temperature is between 32°F and 95°F (0°C and 35°C).
- The play time of your PIM Display Video System may shorten in low-temperature conditions.
- Keep your PIM Display Video System away from sources of liquids (such as drinks, washbasins, bathtubs, shower stalls, rain, etc.)
- Do not attempt to open your PIM screen, disassemble it, or remove the battery: you run the risk of electric shock, permanently damaging the device and voiding the warranty.

PIM[®] POWERPACK

USER GUIDE





Material: Aluminum

Measurements: 5.93" x 2.75" x 0.5"

Output 1: DC 5V-2.4A 9.0V-2.0A 12V-1.5A (Max: 18W)

Input 2: Fast USB-C, DC 5V-2.1A 9.0V-2.0A 12V-1.5A (Max: 18W)

Input 3: Micro USB, DC 5V-2.1A 9.0V-2.0A 12V-1.5A

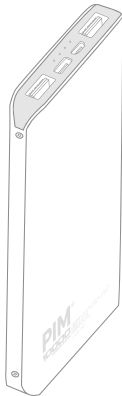
Output 4: DC 5V-2.1A

Working Temperature: 0°C – 45°C

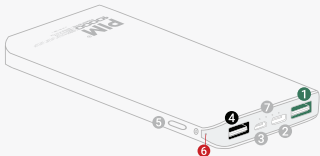
Battery Type: 10,000 mah lithium-ion battery

Weight: 0.5 lbs


Note: included with your PowerPack is an adhesive A/B magnet used to affix it to banner base.



POWERPACK



- ➊ **Output 1:** Only connect 13" screens to this port to play.
- ➋ **Input 2:** Fast USB-C port to charge PowerPack (USB-C cable not included).
- ➌ **Input 3:** Micro USB port to charge PowerPack (Micro USB cable included).
- ➍ **Output 4:** Only connect 7" & 10" screens to this port to charge & play.

Light	● ● ● ● ●	☀ ● ● ● ●	☀ ☀ ● ● ●	☀ ☀ ☀ ● ●	☀ ☀ ☀ ☀ ●
	No Power	< 25%	25 - 50 %	50 - 75 %	75 - 100 %

battery light indicator

- ➎ **On/Off:** Press and hold switch to turn on/off the PIM PowerPack.
- ➏ **Fast Charge Light:** This LED light will turn on when a USB-C cable is connected and charging.
- ➐ **Battery Light Indicator:** These 4 LED lights will display battery level (see chart above).



Warning

Please read this user guide carefully before operating product.

Improper use of Li-ion batteries may be dangerous and could cause overheating, explosion, and/or fire.

- Keep PowerPack away from flammable substances and sunlight.
- Do not expose PowerPack to rain or water.
- Do not attempt to disassemble PowerPack.

www.pimdisplay.com
www.pim.tv



Warranty information: www.pimdisplay.com/warranty
© **PIM** (Printings In Motion) USA. All rights reserved.